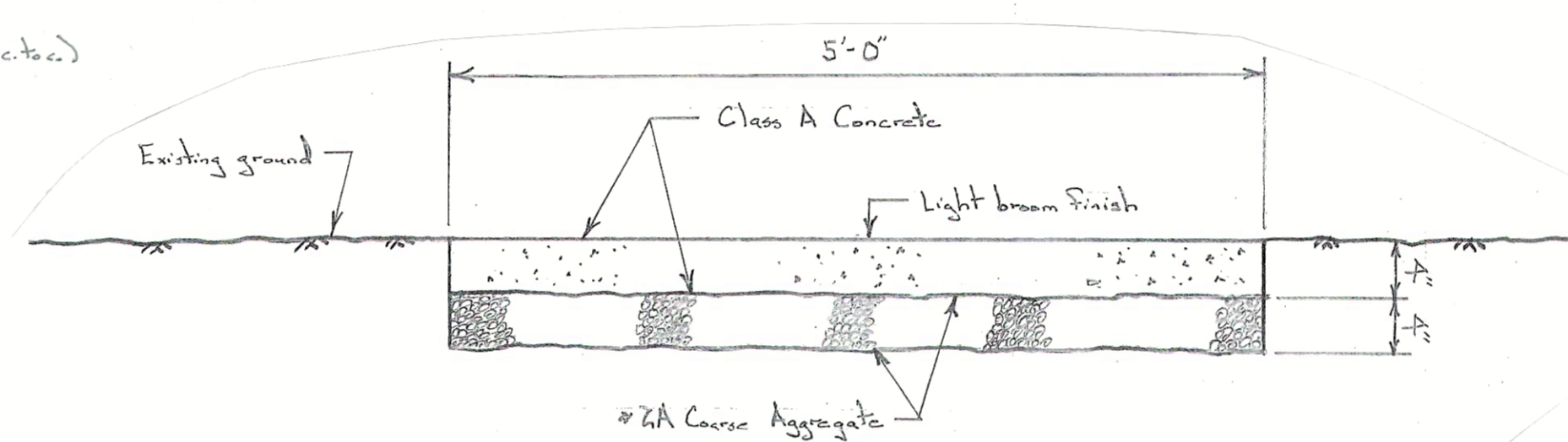


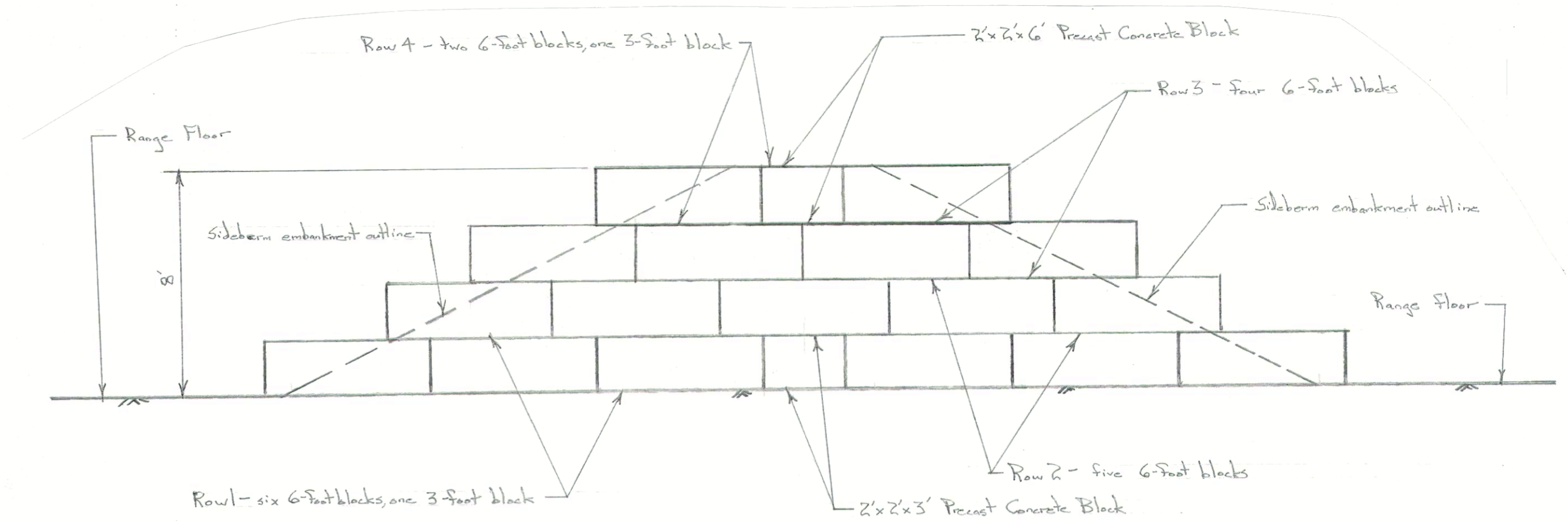
SHOOTING STATION SHELTER SECTION

Scale: 1/4 in. = 1 ft.



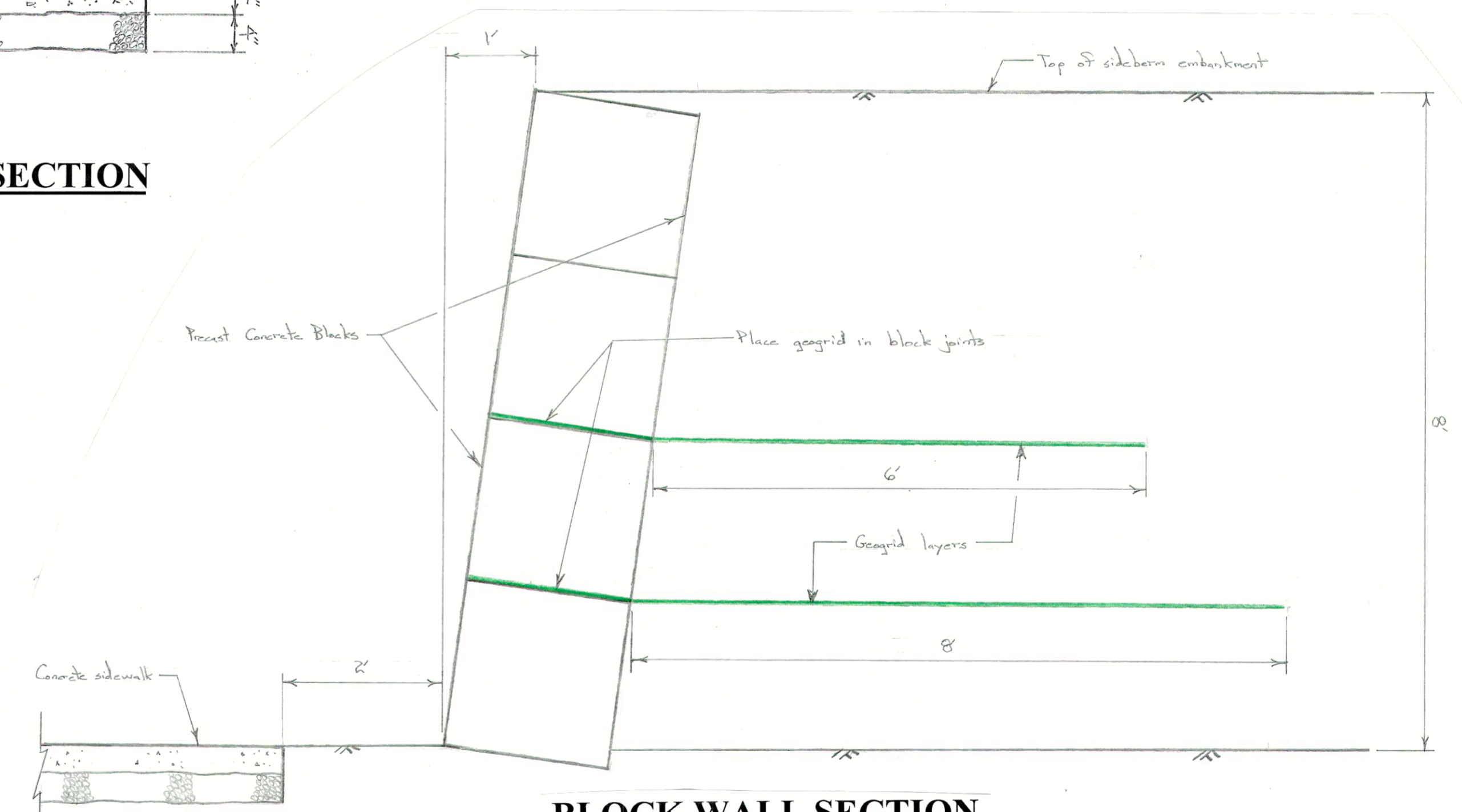
CONCRETE SIDEWALK SECTION

Scale: 1 in. = 1 ft.



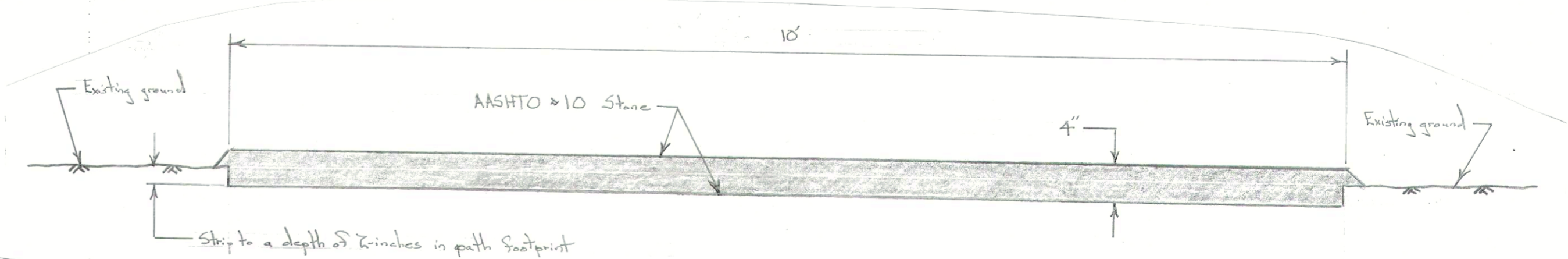
BLOCK WALL ELEVATION

Scale: 1/4 in. = 1 ft.



BLOCK WALL SECTION

Scale: 1/4 in. = 1 ft.



STONE PATH SECTION

Scale: 1 in. = 1 ft.

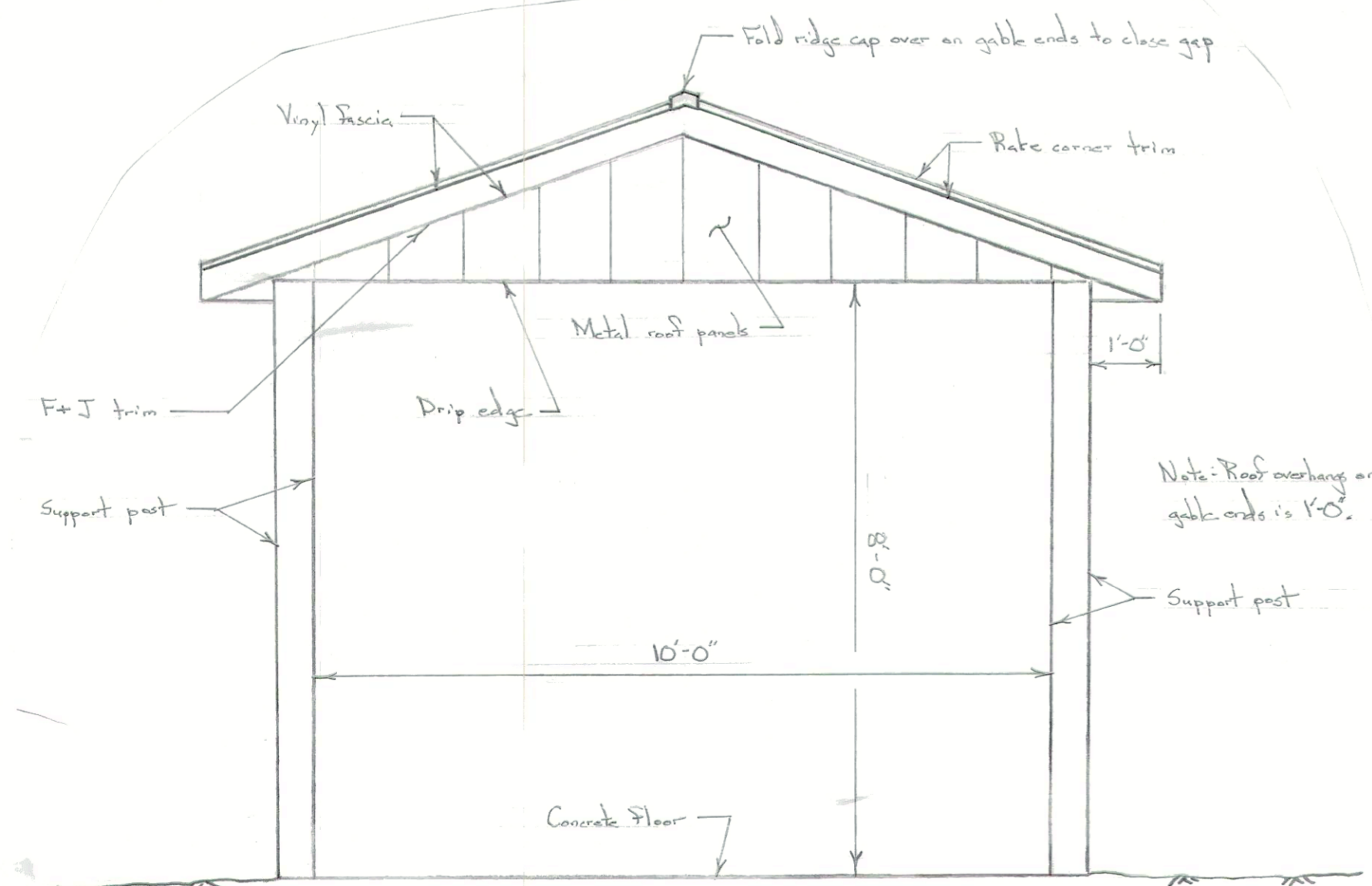
CONCRETE NOTES

1. All concrete is PennDOT Class A concrete with a mix design compressive strength of 3,300 psi. The concrete shall have poly fibers included in the mix.
2. Exposed surfaces shall receive a light broom finish for traction.
3. Concrete shall be membrane cured. Membrane can be applied by spray, roller or brush.
4. All exposed edges shall be rounded with a concrete edger. The edger shall have a 1/2-inch radius.
5. The floor slabs in the shooting station shelters shall have joints spaced on 8-foot centers. The joints can be formed, tooled or sawcut.
6. Joints in the sidewalk shall be spaced on 5-foot centers.
7. Every third joint shall be an expansion joint with 3/4" preformed joint material.

FASTENER SCHEDULE - SHOOTING STATION SHELTERS

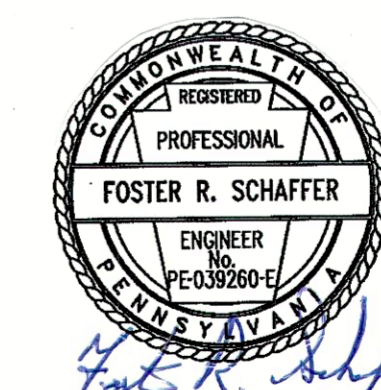
Connection	Fasteners
Truss Seats to Posts	Two 1/2" x 10" Carriage Bolts
Trusses to Truss Seats *	Simpson Strong-Tie H1Z Hurricane Tie (Z-Max) with 8d nails
Purlins to Trusses (Top Chord)	Two #10-3" Screws
Fascia to Truss Ends	Two #10-3" Screws

* Trusses can also be connected to the truss seats with 2" x 6" scraps on both sides of the trusses and then set in between the truss seats. Use #10-3" screws for these connections.



SHOOTING STATION SHELTER END ELEVATION

Scale: 1/4 in. = 1 ft.



PENNSYLVANIA GAME COMMISSION		
SGL #248	CHERRYHILL TWP.	INDIANA CO.
SHOOTING RANGE MAINTENANCE PROJECT		
STRUCTURAL DETAILS		
REVISIONS		
PROJECT NO.	PGC-248-22-01	
DRAWN BY:	JJS	
DATE:	12/30/22	
SHEET NO.	4 OF 5	